

**FOR IMMEDIATE RELEASE**

**January 8, 2009**

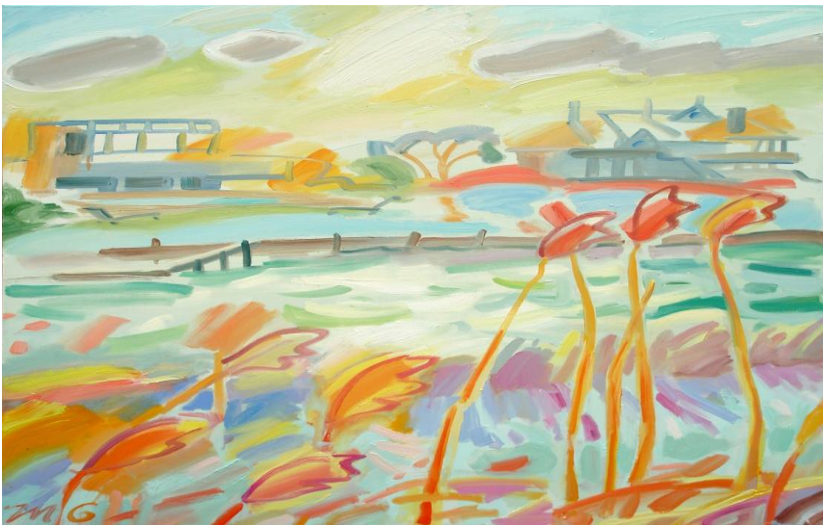
No.18/08-09

**FOR INFORMATION CONTACT:** Mary M. Feder, Director of College Relations  
Suffolk County Community College (631) 451-4256  
feder@sunysuffolk.edu

**SUFFOLK COUNTY COMMUNITY COLLEGE PRESENTS FACULTY ART EXHIBIT  
ON THE EASTERN CAMPUS FROM JANUARY 28 – FEBRUARY 27, 2009**

Selden, NY – The Lyceum Gallery, located on the Eastern Campus of Suffolk County Community College in Riverhead, will present an exhibition of work from members of the Campus' art faculty beginning on January 28, 2009 and continuing through February 27, 2009.

The public is invited to view the exhibit, which will include works submitted in a wide variety of media, ranging from large oil paintings and photographs to precious metal clay jewelry. A reception for the artists will be held on Thursday, February 5, 2009 from 4:00 to 6:00 PM and is open to the public. For directions and gallery hours, please call 548-2559.



**Photo Caption:** “*Beach House*” by SCCC Professor of Fine Arts, Margery Gosnell-Qua, is one of many pieces of artwork that will be on display at the Suffolk County Community College Faculty Art Exhibit on the Eastern Campus from January 28 – February 27, 2009.

## **About Suffolk County Community College**

Suffolk County Community College (SCCC) is the largest community college in the State University of New York (SUNY) system, enrolling more than 23,000 students at its three campuses in Selden, Brentwood and Riverhead. SCCC offers the Associate in Arts (A.A.), Associate in Science (A.S.), and Associate in Applied Science (A.A.S.) degree, as well as a variety of certificate programs. Offering the lowest college tuition on Long Island, a highly respected Honors program, extensive extracurricular activities, championship athletic teams, and numerous unified transfer programs, SCCC is a first-choice college for Long Island students.

###